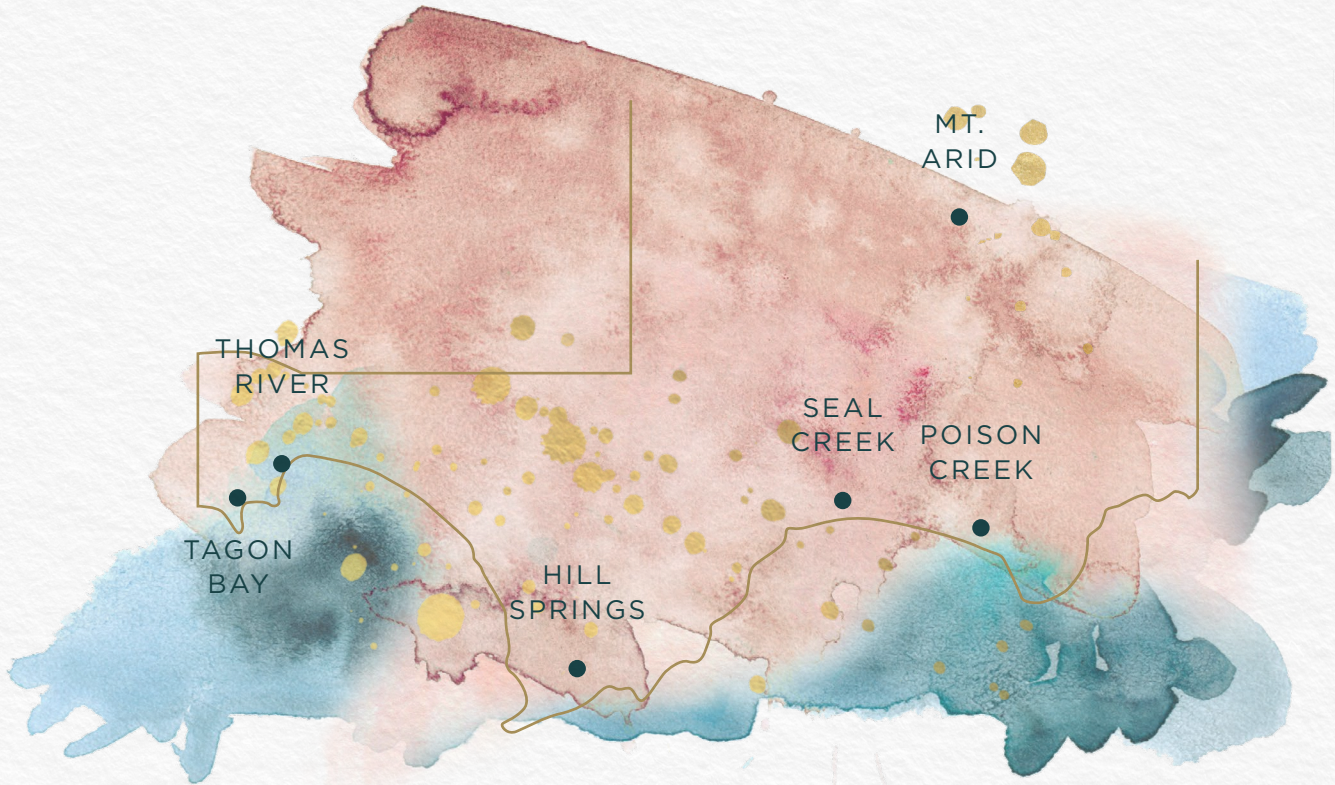


CAPE ARID
ROOMS

CAPE ARID REGION



841 kilometres from Perth Point Zero

CAPE ARID — WINTER TO SPRING

Wild, remote, seemingly untouched.

Winter awaits as the swell begins to rage and roll; to reimagine a coastline that has been washed and pursued by the great Southern Ocean for an eternity.

Nature's sandy tracks are blown away and winter will stubbornly set in – uninvited of course, to rejuvenate the dunes and wipe clear the paw prints and miniscule living indentations of Mother Nature's greatest travelers. The perfect seasonal housekeeper, blowing in and out with reckless abandon, sucking autumn into the billowing ether.

Plump Australian Sea Lions will slumber atop the unctuous beds of seaweed, while yellow-footed Grey Reef Heron will shop the rocks for a low-tide delicacy that even the winter-weary will hunt for. This season will not slow the activity and this great Cape Arid region will live on through every tide and tumult.

Winter has arrived...

AFTERNOON TEA | 85PP

Cape Arid Rooms afternoon tea, served with your choice of Teassential tea or Mano a Mano filter coffee.

Liberty chicken sandwich, celery, yoghurt, Dijon

Halls Family Dairy camembert, leek filo tartelette, whipped horseradish crème fraiche

Shark Bay prawns, brioche, dill, cucumber, Marie rose dressing

Donnybrook pear tatin, miso caramel namelaka, chocolate sable

Tucker Bush Quandong & persimmon cheesecake, ginger Sable Breton

Bannister Downs Diary Cream, tonka bean, blood orange choux

Accompanied by house baked scones



“One cold and wet day when we were trying to keep dry under the open canvas shelter... I wrote in my field diary, using the language of the early explorers, ‘Today we have endured the southern gales and hail’...”

THE DIARY OF PHILIPPA NIKULINSKY



Halls Family
Dairy Camembert



Liberty chicken



Northern Star Seafood
Shark Bay prawns



Tucker Bush
Quandong



Banister Downs
Dairy Cream



Morley Growers
Market Pears

Bullsbrook - 40kms

Wokalup - 142 kms

Hacketts Gully - 38kms

Wokalup - 142 kms

Donnybrook - 201kms

Shark Bay - 83kms

Perth Point Zero

841km

Cape Arid



THE ART OF TEA

We individually brew each tea at the perfect temperature and brewing time.

Sweet and Mellow

Kiss from a Rose | *A blend of white tea, orange, rose, jasmine 85°/4 mins*

Arakai Black Tea | *Australian grown premium black tea 85°/2 mins*

Apple Spice | *Apple, toasted cinnamon, orange, ginger 100°/4 mins*

Light and Aromatic

Gin Shan Creme Oolong | *Light oolong tea with a creamy stone fruit aroma 85°/4 mins*

French Earl Grey | *Floral black tea with bergamot oil 85°/2 mins*

Jasmine Pearl | *Hand-rolled white tea gently scented with jasmine blossoms 75°/4 mins*

Darjeeling | *Champagne of the tea world, distinct muscatel aroma 100°/2 mins*

Osmanthus | *Golden Tip black tea, fruit, floral sweetness 100°/3 mins*

Dragon Well | *Chinese green tea, balanced, flavours of subtle olive 85°/2–4 mins*

Vibrant and Refreshing

Cape Arid Breakfast | *Breakfast black tea blended with native strawberry gum 100°/2 mins*

Rejuvenate | *Green tea, organic lemon myrtle, lavender, eucalyptus 85°/4 mins*

Minted Raspberry | *Organic peppermint, spearmint, freeze dried raspberry, vanilla 100°/4 mins*

Organic Lemongrass & Ginger | *Subtle warmth of ginger & fresh aroma of lemongrass 100°/4 mins*

Immune Booster | *Ginseng, spearmint, rosehip, ginger 100°/4 mins*

Rich and Bold

Assam | *Black tea from the Assam region in India 100°/2 mins*

Lapsang Souchong | *Smoky Chinese black tea 100°/2 mins*

Houjicha | *Highly aromatic sencha from Acheron Valley, lightly roasted 80°/2 mins*

Ceylon Tea | *Sri Lankan Kenilworth black tea, bold and robust 100°/4 mins*

Rare and Precious

Gyokuro Tea | *Sweet, mellow & refreshing*

One of the highest grade teas in Japan, shaded by bamboo before harvest 75°/2–3 mins

14

Bai Ying Shan Shen | *Pu-erth, mountainous ancient Chinese tea trees with delightful sweetness, rich and robust flavours 100°/4mins*

14

FILTER COFFEE

The inherent nature of filter brewed coffee paired with the flavour profile, allows for lower acidity, greater sweetness, and a cleaner finish. By using a higher percentage of water and a longer extraction time, filter coffee - when compared to espresso, enhances the unique characteristics associated with the individual processing, terroir and roast profile, delivering the finest flavour experience to the end consumer.

ESPRESSO COFFEE

Espresso Coffee by Mano a Mano Coffee Roasters

Flat white	5
Espresso	4
Cappuccino	5
Latte	5
Long macchiato	5
Milk alternatives	add 2

BY THE GLASS

Taittinger 'Cuvée Prestige' Brut NV <i>Reims</i>	35
Howard Park 'Petit Jeté' Blanc de Blancs NV <i>Pemberton/Mt Barker</i>	15
Frazer Woods Pinot Chardonnay NV <i>Pemberton/Margaret River</i>	18
Idée Fixe Brut Rosé 2022 <i>Margaret River</i>	23

STILL WINE

Fraser Gallop 'Estate' Semillon Sauvignon Blanc 2024 <i>Margaret River</i>	15/75
Howard Park 'Miamup' Chardonnay 2024 <i>Margaret River</i>	16/80
Swell Season Rosé 2024 <i>Margaret River</i>	15/72
Singlefile 'Run Free' Pinot Noir 2023 <i>Denmark, WA</i>	16/70
Credaro 'Kinship' Cabernet Sauvignon 2022 <i>Margaret River, WA</i>	17/85

SPARKLING

Howard Park 'Petit Jeté' Blanc de Blancs NV <i>Pemberton/Mt Barker</i>	75
Fraser Woods Pinot Chardonnay NV <i>Pemberton/Margaret River</i>	82
Idée Fixe Blanc de Blancs 2022 <i>Margaret River</i>	110
Leeuwin Estate Brut Pinot Noir Chardonnay 2022 <i>Margaret River</i>	89
Idee Fixe Brut Rosé 2022 <i>Margaret River</i>	115
Deviation Road 'Altair' Brut Rosé NV <i>Adelaide Hills</i>	85
Oakridge Blanc de Blancs 2017 <i>Yarra Valley</i>	95
Arras Brut Elite NV <i>South East TAS</i>	125
Louis Bouillot Perle d'Aurore Rosé de Presse NV <i>Burgundy</i>	80
Lucien Albrecht Cremant d'Alsace NV <i>Alsace</i>	75
Lantieri Franciacorta 'Cuvée Brut' DOCG NV <i>Lombardy</i>	105
Massolino Moscato d'Asti 2024 <i>Piedmont</i>	120
Kolonne Null Non-Alcoholic Sparkling (375ml) <i>Berlin, Germany</i>	45

SPRITZ 750ml Bottle

Zonzo 'Zoncello' Limoncello Spritz 2023 <i>Yarra Valley</i>	65
Zonzo Bellina 'Bellini di Cristina' 2023 <i>Yarra Valley</i>	65
Zonzo 'Cicchio' Pistachio Spritz 2023 <i>Yarra Valley</i>	65

CHAMPAGNE

Non-Vintage

Taittinger 'Cuvée Prestige' Brut NV <i>Reims</i>	195
Pol Roger 'Brut Réserve' NV <i>Épernay</i>	215
Louis Roederer 'Collection 244' NV <i>Reims</i>	245
Charles Heidsieck 'Brut Reserve' NV <i>Reims</i>	245
Bollinger 'Special Cuvée' Brut NV <i>Aj</i>	235
Krug 'Grande Cuvée' NV <i>Reims</i>	695

Blanc de Blancs

Veuve Fourny & Fils Blanc de Blancs Brut NV <i>Vertus</i>	185
Larmandier-Bernier 'Latitude' Blanc de Blancs NV <i>Vertus</i>	350
Agrapart 'Terroirs' Blanc de Blancs NV <i>Avize</i>	395

Blanc de Noirs

Lallier Blanc de Noirs NV <i>Aj</i>	265
-------------------------------------	-----

Rosé

Billecart-Salmon Brut Rosé NV <i>Mareuil-sur-Aj</i>	295
Ruinart Rosé NV <i>Reims</i>	325

Vintage

Laurent Perrier Millésime Brut 2015 <i>Tours-sur-Marne</i>	325
Franck Bonville Brut Millésime Blanc de Blancs 2015 <i>Avize</i>	275

COCKTAILS

Non-alcoholic options are available for 16

Nimbus	22
Cape Arid Gin, lavender & eucalyptus, blood orange, white chocolate & rosé cloud	

Peach Shan Crème	22
Cape Arid Gin, peaches, gin shan crème oolong, honey & cacao brush stroke	

Banksia Bloom	22
Cape Arid Gin, strawberry gum & lychee, finger lime, pineapple, lime soda	

ICED TEA

Celebritea	14
Green tea, hibiscus, rose hip, marigold apple, strawberry	

Purple Rain	14
Blueberries, Australian Sencha green tea, apple, mango, butterfly pea flower, passionfruit flavour.	



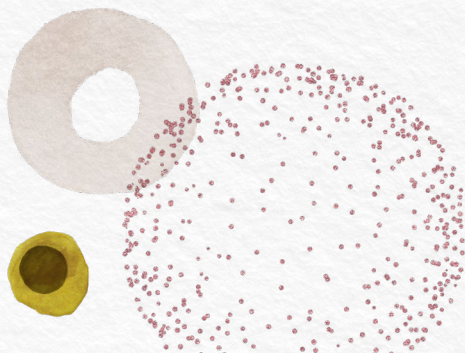
HORIZON GIN

It began with father and son; an avid gardener, a wild windsurfer, a deep passion for local greenery, and the creation of Australia's smallest gin distillery. Bottling the spirit of a remote coastal region became an impassioned endeavour that led to the beginnings of the Esperance Distillery Co, and there a deeply personal partnership with the team at the Cape Arid Rooms began.

Following an expedition to Cape Arid; guided with consultation by Esperance Tjaltjraak Native Title Aboriginal Corporation, and botanists, a variety of botanicals endemic to Esperance were identified for the delicate aromatic properties required. Then carefully collected for creation, further workings with nurseries have been established to encourage propagation and conservation of species, for the future preservation of continued regeneration.

Inspired by Philippa Nikulinsky's exquisite artistic expressions of the area, and the unique formulation of an exciting and vibrant recipe; this is a take-home experience bottled from the fires of curiosity, driven by the desires for excellence.

CA HORIZON GIN, TAKE ME HOME - \$90







Contact: (08) 6168 7780 | Email: capearidrooms.thetreasury@comohotels.com

1 Cathedral Avenue, Perth WA 6000