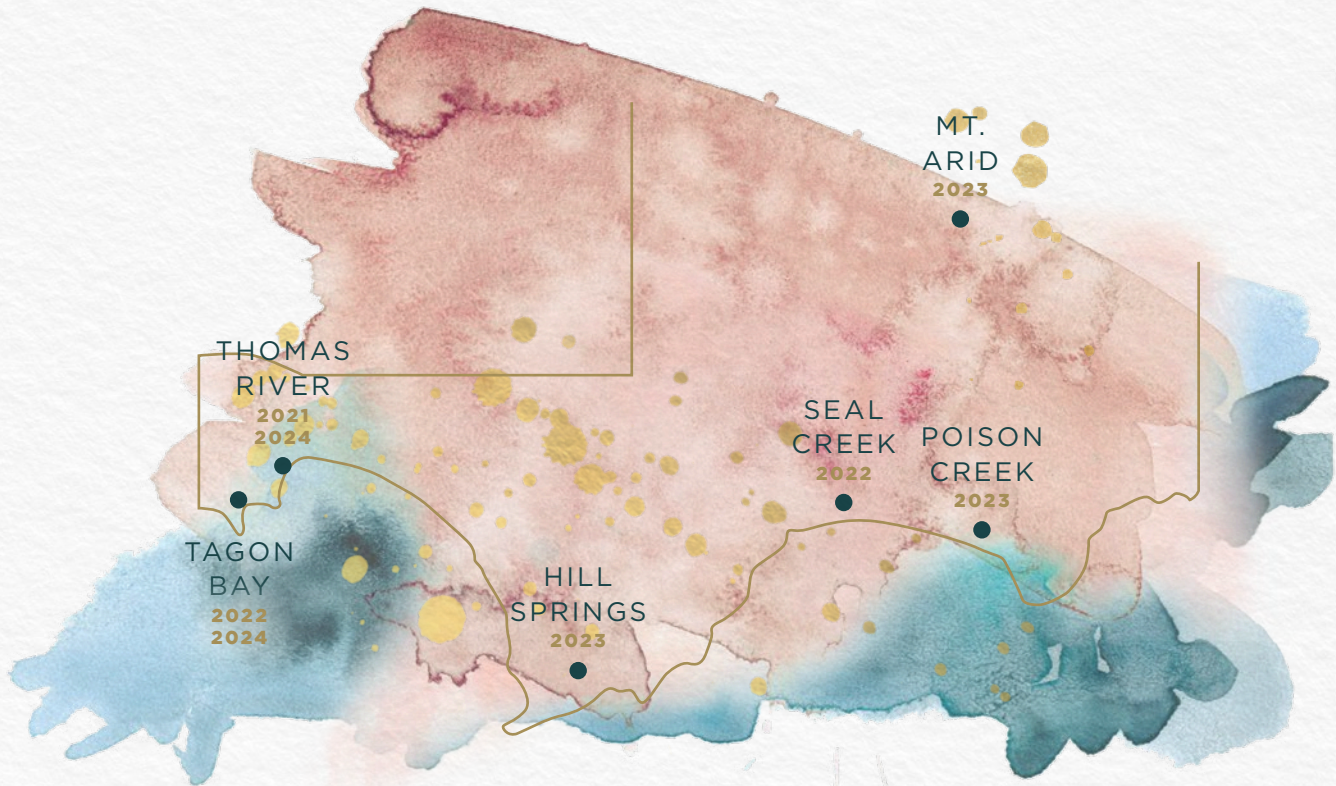


CAPE ARID  
ROOMS

## CAPE ARID REGION



841 kilometres from Perth Point Zero



## A RETURN TO TAGON BAY 2024

Follow the ancient coastline even deeper south as we journey back to Tagon Bay. The wait for a change in season grows longer; the tides will swell and the weather will drive the waves relentlessly to the shore – pounding in and out. The clouds will brew in a darkly tumultuous mood, ready to dump at Mother Nature's command. A clouded full moon will beam down on the polar white sands, reflecting an unnatural, alien glow, even at night time. The whales will still migrate from winter through to spring, as the Cape Arid emus embed their strident step into the sand, running for shelter from the burrowing winds.

Winter will arrive, and the heavens will open to Tagon Bay.

“Glorious golden full moon tonight with wispy clouds crossing it. Spent most of the day watching and photographing honey possums in the *Banksia speciosa*.  
I thought they were nocturnal!”

## THE DIARY OF PHILIPPA NIKULINSKY

## AFTERNOON TEA | 85PP

Cape Arid Rooms afternoon tea, served with your choice of Teassential tea or Mano a Mano filter coffee.

- Pumpkin and rosemary tartlet, feta, honey, macadamia & native thyme
- Cured beef crostini, onion cream, cornichon, pickled beetroot
- Smoked salmon sandwich, lemon mayonnaise, salmon caviar
- Mandarin tartlet, almond frangipane, orange glaze
- Coffee éclair, vanilla cream, coffee creamoux
- Bahen and Co chocolate mousse cake, Oreo cookies, white chocolate glaze

*Accompanied by freshly baked scones*

## PAIRED SPARKLING AND CHAMPAGNE *gls*

Myattsfield Sparkling Vermentino NV <i>Perth Hills</i>	15
Frazer Woods Pinot Chardonnay NV <i>Pemberton/Margaret River</i>	18
Taittinger 'Cuvée Prestige' Brut NV <i>Reims</i>	35

## SPECIALTY COCKTAILS

*Non-alcoholic options are available for 16*

Wine Dark Sea	20
Cape Arid Gin, no 7 cherry & coffee, lemon aspen, lemon & ginger soda	
Banksia Bloom	20
Cape Arid Gin, strawberry gum & lychee, finger lime, pineapple, lime soda	
Lightning Strike	20
Cape Arid Gin, Davidson plum, pear & lavender ferment	
Purple Rain <i>non-alcoholic tea</i>	14
Blueberries, Australian Sencha green tea, apple, mango, butterfly pea flower, passionfruit flavour	





## THE ART OF TEA

We individually brew each tea at the perfect temperature and brewing time.

### Sweet and Mellow

Kiss from a Rose | *A blend of white tea, orange, rose, jasmine 85°/4 mins*

Arakai Black Tea | *Australian grown premium black tea 85°/2 mins*

Apple Spice | *Apple, toasted cinnamon, orange, ginger 100°/4 mins*

### Rich and Bold

Assam | *Black tea from the Assam region in India 100°/2 mins*

Lapsang Souchong | *Smokey Chinese black tea 100°/2 mins*

Houjicha | *Highly aromatic sencha from Acheron Valley, lightly roasted 80°/2 mins*

### Vibrant and Refreshing

Cape Arid Breakfast | *Breakfast black tea blended with native strawberry gum 100°/2 mins*

Rejuvenate | *Green tea, organic lemon myrtle, lavender, eucalyptus 85°/4 mins*

Minted Raspberry | *Organic peppermint, spearmint, freeze dried raspberry, vanilla 100°/4 mins*

Organic Lemongrass & Ginger | *Subtle warmth of ginger & fresh aroma of lemongrass 100°/4 mins*

Immune Booster | *Ginseng, spearmint, rosehip, ginger 100°/4 mins*





### Light and Aromatic

Gin Shan Creme Oolong | *Light oolong tea with a creamy stone fruit aroma* 85°/4 mins

French Earl Grey | *Floral black tea with bergamot oil* 85°/2 mins

Jasmine Pearl | *Hand-rolled green tea gently scented with jasmine blossoms* 75°/4 mins

Darjeeling | *Champagne of the tea world, distinct muscatel aroma* 100°/2 mins

### Rare and Precious

Gyokuro Tea | *Sweet, mellow & refreshing*

One of the highest grade teas in Japan, shaded by bamboo before harvest

75°/2–3 mins

14

## CHAMPAGNE

### Non-Vintage Champagne

Taittinger 'Cuvée Prestige' Brut NV <i>Reims</i>	195
Pol Roger 'Brut Réserve' NV <i>Épernay</i>	195
Louis Roederer 'Collection 243' NV <i>Reims</i>	185
Charles Heidsieck 'Brut Reserve' NV <i>Reims</i>	195
Bollinger 'Special Cuvée' Brut NV <i>Aj</i>	235
Krug 'Grande Cuvée' NV <i>Reims</i>	695

### Blanc de Blancs

Veuve Fourny & Fils Blanc de Blancs Brut NV <i>Vertus</i>	135
Larmandier-Bernier 'Latitude' Blanc de Blancs NV <i>Vertus</i>	350
Agrapart 'Terroirs' Blanc de Blancs NV <i>Avize</i>	395

### Blanc de Noirs

Lallier Blanc de Noirs NV <i>Aj</i>	265
-------------------------------------	-----

### Rosé

Billecart-Salmon Brut Rosé NV <i>Mareuil-sur-Aj</i>	285
Ruinart Rosé NV <i>Reims</i>	325

### Vintage

Laurent Perrier Millésime Brut 2012 <i>Tours-sur-Marne</i>	265
Franck Bonville Brut Millésime Blanc de Blancs 2015 <i>Avize</i>	275

## AUSTRALIAN SPARKLING

Howard Park 'Jeté Brut Blanc' NV <i>Great Southern</i>	80
Idee Fixe Blanc de Blancs 2021 <i>Margaret River</i>	110
Leeuwin Estate Brut Pinot Noir Chardonnay 2020 <i>Margaret River</i>	89
Deviation Road 'Altair' Brut Rosé NV <i>Adelaide Hills</i>	85
Oakridge Blanc de Blancs 2016 <i>Yarra Valley</i>	95
Arras Brut Elite NV <i>South East TAS</i>	125

## WORLD SPARKLING

Louis Bouillot Perle d'Aurore Rosé de Presse NV <i>Burgundy</i>	80
Lucien Albrecht Cremant d'Alsace NV <i>Alsace</i>	75
Lantieri Franciacorta 'Cuvée Brut' DOCG NV <i>Lombardy</i>	105
Massolino Moscato d'Asti 2020 <i>Piedmont</i>	120
Kolonne Null Non-Alcoholic Sparkling (375ml) <i>Berlin, Germany</i>	45

## STILL WINE

Fraser Gallop 'Estate' Semillon Sauvignon Blanc 2023 <i>Margaret River</i>	75
Howard Park 'Miamup' Chardonnay 2022 <i>Margaret River</i>	80
Swell Season Rosé 2023 <i>Margaret River</i>	72
Run Free Pinot Noir 2023 <i>Denmark, WZ</i>	70



## FILTER COFFEE

The inherent nature of filter brewed coffee paired with the flavour profile of our featured roasters, allows for a lower acidity, greater sweetness, and a cleaner finish. This offers the perfect coffee accompaniment to the Cape Arid Rooms afternoon tea menu. By using a higher percentage of water and a longer extraction time, filter coffee – when compared to espresso, enhances the unique characteristics associated with the individual processing, terroir and roast profile. All of these factors lead to a better expression of a coffee, delivering the finest flavour experience to the end consumer.

In this edition, we are delighted to introduce you to the flavours of Finca El Silencio. Owned by Rivier Quintero and located in the highlands of the municipality Inzá, Cauca, this farm spans between two mountains of the Colombian Andes. Rivier named the farm El Silencio in dedication to the peace and tranquillity that his lofty home exudes, and with three generations of coffee producers in the family line, his wife Flor and their son's continue the tradition by working the business together.

### Espresso Coffee by Mano a Mano Coffee Roasters

Short black	4
Short macchiato	4
Cappuccino	5
Latte	5
Flat white	5
Long macchiato	5
Milk alternatives, add	2





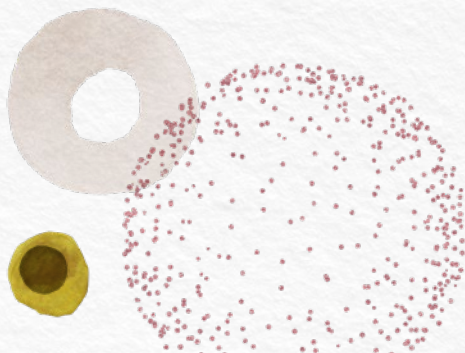
## HORIZON GIN

It began with father and son; an avid gardener, a wild windsurfer, a deep passion for local greenery, and the creation of Australia's smallest gin distillery. Bottling the spirit of a remote coastal region became an impassioned endeavour that led to the beginnings of the Esperance Distillery Co, and there a deeply personal partnership with the team at the Cape Arid Rooms began.

Following an expedition to Cape Arid; guided with consultation by Esperance Tjaltjraak Native Title Aboriginal Corporation, and botanists, a variety of botanicals endemic to Esperance were identified for the delicate aromatic properties required. Then carefully collected for creation, further workings with nurseries have been established to encourage propagation and conservation of species, for the future preservation of continued regeneration.

Inspired by Philippa Nikulinsky's exquisite artistic expressions of the area, and the unique formulation of an exciting and vibrant recipe; this is a take-home experience bottled from the fires of curiosity, driven by the desires for excellence.

**CA HORIZON GIN, TAKE ME HOME - \$90**









Contact: (08) 6168 7780 | Email: [capearidrooms.thetreasury@comohotels.com](mailto:capearidrooms.thetreasury@comohotels.com)

1 Cathedral Avenue, Perth WA 6000